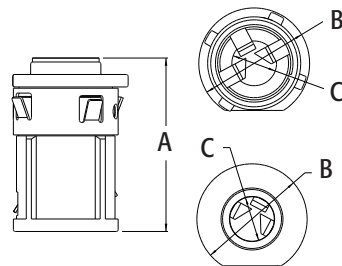




38RAST



40RAST



## Retrofit SNAP<sup>2</sup>IT<sup>®</sup> Cable Connectors

Zinc die-cast. For AC, MC, HCF, MC Continuous corrugated aluminum cable, MCI-A cables (steel and aluminum), AC90 ACG90 and FLEX.

| CATALOG NUMBER | UPC/DCI/NAED MFG #018997 | TRADE SIZE | KO SIZE | UNIT PKG | STD PKG | DIM A | DIM B | DIM C | DIA. RANGE  |
|----------------|--------------------------|------------|---------|----------|---------|-------|-------|-------|-------------|
| 38RAST         | 13586                    | 3/8        | 1/2     | 25       | 25      | 1.390 | 1.000 | .404  | .405 - .610 |
| 40RAST         | 13587                    | 3/8        | 1/2     | 25       | 25      | 1.390 | 1.000 | .404  | .480 - .610 |

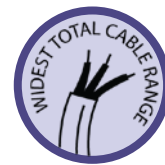


**PATENTED.**  
**MADE IN USA.**

Red tinted inside. CSA Listed with anti-short bushing ONLY. Refer to chart on page E-27 for list of cable types. See page E-30 and E-31 for MCI-A cable ranges.

### FEATURES AND BENEFITS

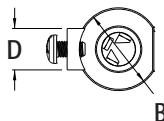
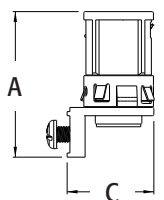
- Super secure installation, no pullout!
- Fully assembled one piece design with insulated throat
- Widest total cable ranges accommodates cables from 14/2 to 10/3
- Widest variety of cables



38RASTG



40RASTG



## SNAP<sup>2</sup>IT<sup>®</sup> Cable Connectors with Built In Ground for Retrofit or New Work

Zinc die-cast. For AC, MC, HCF, MC Continuous corrugated aluminum cable, MCI-A cables (steel and aluminum), AC90 ACG90 and FLEX.

| CATALOG NUMBER | UPC/DCI/NAED MFG #018997 | TRADE SIZE | KO SIZE | UNIT PKG | STD PKG | DIM A | DIM B | DIM C | DIM D | CABLE RANGE |
|----------------|--------------------------|------------|---------|----------|---------|-------|-------|-------|-------|-------------|
| 38RASTG        | 13588                    | 3/8        | 1/2     | 25       | 25      | 1.780 | 1.000 | 1.046 | .500  | .405 - .610 |
| 40RASTG        | 22091                    | 3/8        | 1/2     | 25       | 25      | 1.780 | 1.000 | 1.046 | .500  | .480 - .610 |

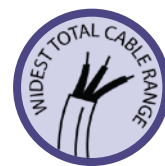


**PATENTED.**  
**MADE IN USA.**

Red-tinted inside. CSA Listed with anti-short bushing ONLY. Refer to chart on page E-27 for list of cable types. See page E-30 and E-31 for MCI-A cable ranges.

### FEATURES AND BENEFITS

- Super secure installation, no pullout!
- Fully assembled one piece design with insulated throat
- Widest total cable ranges accommodates cables from 14/2 to 10/3
- Widest variety of cables



### INSTALLATION SHOTS